

5

6

7

8

OBJEKT "C"

50800

7200

7200

7200

5

NK

5

K2

L

Z

-0,050

250

2400

6775

±0,000

7050

3225

150

150

1660

2190

125

3400

1250

2600

125

6300

100

2800

100

1850

DILATÁCIA

6

K1

K1

V

7200

7200

6300

6000

6800

29400

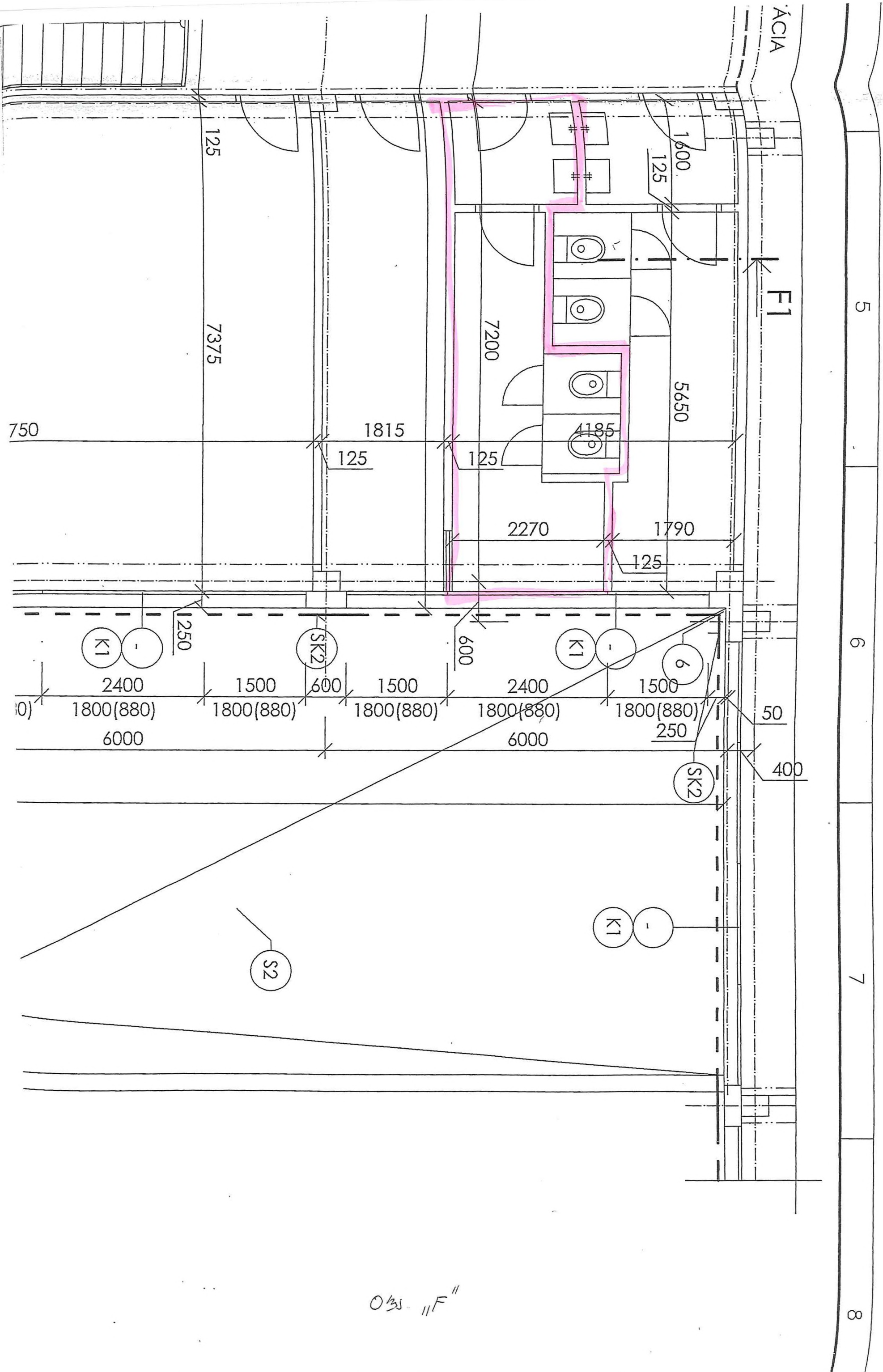
5

6

7

8





0/35 "F"